

SPECIFICATIONS

SPEC. No. CC-1004

DATE MAR. 1995

SPECIFICATIONS HYDRAULIC CRAWLER CRANE

MODEL: UNIC UR255CA

Specifications subject to change without notice.

FURUKAWA UNIC CORPORATION

*EXPORT TECHNICAL DEPT
TOKYO JAPAN*

UNIC CRANE PERFORMANCE

MODEL : UR255CA

CRANE CAPACITY:

LIFTING CAPACITY : Max. 24.76kN {2525kgf} at 1.5m

HOOK HEIGHT

ABOVE GROUND LEVEL : Max. 7.0m

BELOW GROUND LEVEL : Max. 16.1m with 3-part line

WORKING RADIUS

: Min. 0.54m to Max. 6.76m

BOOM:

Four-section box beam type telescoping boom

Boom Length

Retracted boom ; 2.15m

Extended boom ; 6.94m

Boom Extending Speed ; 4.79m/33sec

Boom Raising Speed ; 0° to 75°/23sec

WINCH :

Hydraulic motor driven, spur gear reduction, with automatic mechanical brake.

Single Line Pull ;

8.24kN {840kgf}

Hoisting Speed

Single line speed ; 16.8m/min at 4th layer

Hook speed ; 5.6m/min at 4th layer with 3-part line

Hook Block ;

24.52kN {2500kgf} capacity, 1 sheaves with safety latch

Wire Rope

Construction (JIS) ; 6 × WS (26) GRADE C

Diameter × Length ; 8mm × 34m

Breaking strength ; 39.13kN {3990kgf}

SLEWING:

Axial plunger motor plus worm reduction & spur gear reduction (supported by bearings)

Slewing Range ;

360° continuous rotation on a ball bearing race

Slewing Speed ;

1.5rpm

OUTRIGGERS:

1-section (with damper) for bend at a right angle and 2-section extension.
A double acting hydraulic cylinder, direct pushing type.
(directly connected with hydraulic automatic lock device)

HYDRAULIC SYSTEM:

Hydraulic Pump

Type ;	Gear type
Rated pressure ;	16.18MPa {165kgf/cm ² }
Rated delivery ;	14 l /min.
Rated revolution ;	1800rpm

Hydraulic Valves

Control valve ;	Multiple control valve, spring centered, spool-type, with pressure relief valve
-----------------	---

Pressure relief

valve setting ;

16.18MPa {165kgf/cm²}

Counterbalance valve ;

Boom raising and boom telescoping cylinders

Pilot-operated
check valve ;

Outrigger cylinders

Hydraulic Actuators

Hydraulic motors ;

Hoisting : Axial plunger type

Slewing : Axial plunger type

Hydraulic cylinders ;

Double acting type

2 × Boom raising cylinder

3 × Boom telescoping cylinder

4 × Outrigger cylinder

Oil Tank ;

15 l capacity

CRAWLING GEAR:

Crawling

Endless rubber crawler

Crawler

200 × 42 × 72SP

Ground length

1060mm

Ground pressure

0.037Mpa {0.38kgf/cm²}

Speed

Forward 1st 1.5km/h

Forward 2nd 3.9km/h

Reverse 1st 1.3km/h

Reverse 2nd 3.2km/h

Hill climbing ability

20°

Engine
Steering
Parking brake
Starter
Fuel tank Holds

7.5ps/2000rpm Max. output
Side clutch
Internal expansion type
Self starter (Recoil starter)
5.5 litters

SAFETY DEVICES:

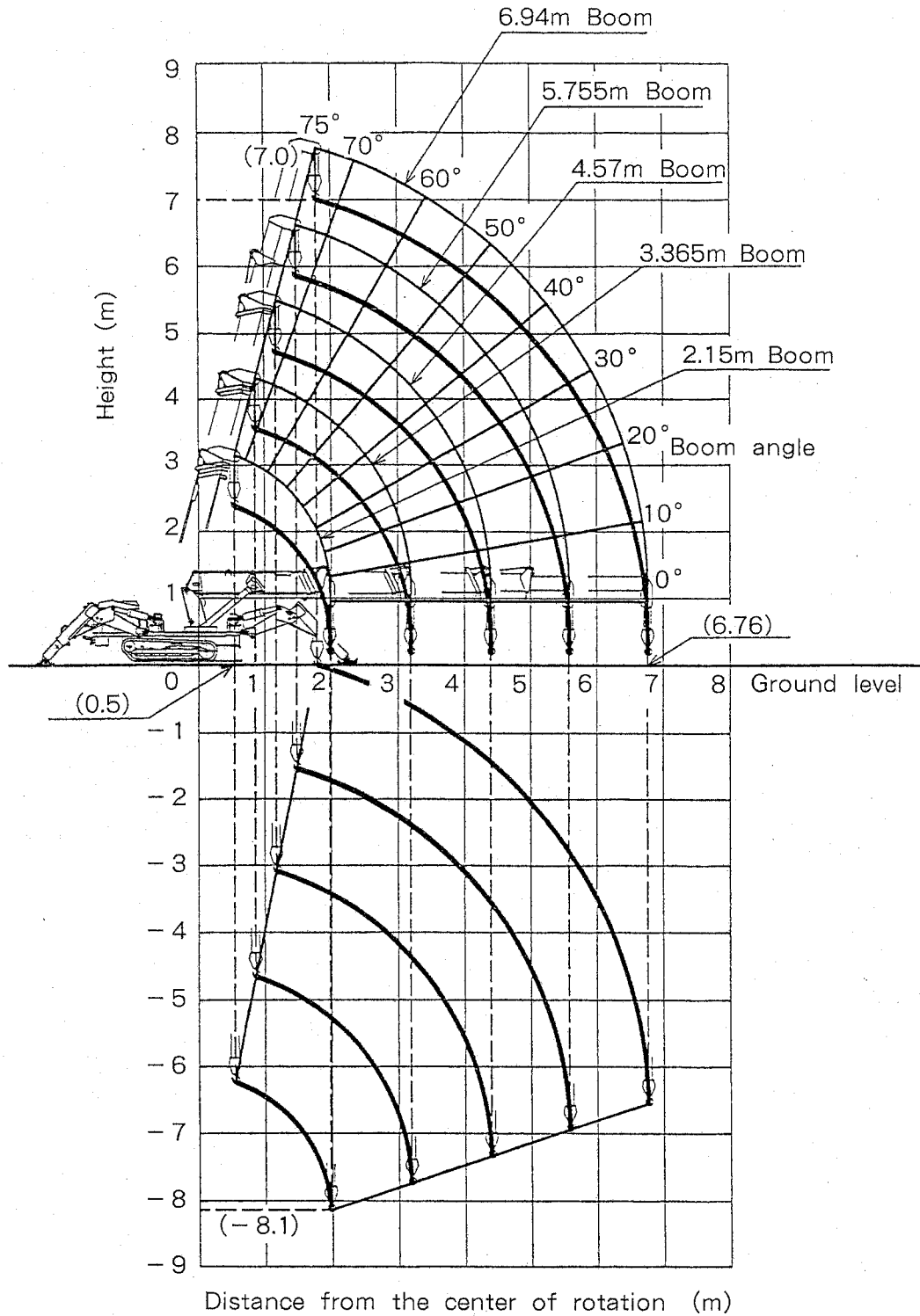
1. Pressure relief valve for hydraulic circuit
2. Counterbalance valves for boom raising and boom telescoping cylinders
3. Pilot-operated check valves for outrigger cylinders
4. Boom angle indicator with load indicator
5. Hook safety latch
6. Automatic mechanical brake for winch
7. Loadmeter
8. Overwinding alarm
9. Bypass valve for crane circuit
10. Level

Weight

1590kg

Note: The figures in relation to the speed are on the basis of no-load running at rated oil flow condition.

WORKING RANGE:



Note: The above figures are based on no-load condition and do not include the deflection of the boom.

RATED LOADS:

Unit : kN {kgf}

Working Radius (m)	Boom length				
	2.15 m	3.365 m	4.57 m	5.755 m	6.94 m
1.0	24.76 {2525}				
1.5	24.76 {2525}				
1.8	20.84 {2125}				
2.0	(1.97) 19.17{1955}	18.88 {1925}	12.01 {1225}		
2.5		14.96 {1525}	12.01 {1225}		
2.9		11.03 {1125}	12.01 {1225}		
3.0		10.05 {1025}	10.74 {1095}	7.11 {725}	
3.5		(3.185) 8.58 {875}	7.11 {725}	7.11 {725}	4.27 {435}
3.6			6.72 {685}	7.11 {725}	4.27 {435}
4.0			5.15 {525}	5.64 {575}	4.27 {435}
4.5			(4.39) 4.17 {425}	4.27 {435}	3.68 {375}
5.0				3.48 {355}	3.19 {325}
5.5				(5.575) 2.70 {275}	2.79 {285}
6.0					2.50 {255}
6.76					1.91 {195}

() : Working radius.

CAUTION

1. Fully extend all outriggers on solid, level surface leveling crawler.
2. The rated load specified above are based on the strength of the crane and the stability of the crawler.
3. When the outriggers are set without extending to their maximum, stability of the crane deteriorates remarkably.
Take special care because it is possible for the crane to be overturned by lifting the cargo with less than the rated load.
4. The weights of hook 0.25kN {25kgf}, slings, and any accessories attached to the boom or loadline must be deducted from the above rated loads in the chart.
5. In accordance with our policy of constant product improvement, all specifications are subject to change without notice or obligations.